

NON-PROFIT ORG.
U.S. POSTAGE
PAID
ST. PAUL, MINN.
PERMIT No. 2168

A healthy congregation grounded in God's grace, sharing our faith through passionate ministry in an ever-changing world.



CELEBRATING

Together

2008-2009 ANNUAL REPORT



**Special
Summer
Newsletter**
page 8

mark your calendars
2009 ANNUAL MEETING
SUNDAY, JUNE 28th 10 a.m.

see page 8 for more information!

lead pastor's report

*This is the message we have heard from him and pertains to you,
that God is light and in Him is no darkness at all.*

I John 1:5



Cindy and I share many things in common. One of these is our love for the cardinal.

This bird of God's making wears the color of celebration. Their red especially against the winter white is so remarkable. We still get excited like children when one stops by for a bite to eat or passes by to the neighbor's yard. Its song and cadence are unique and easily recognized by the ear that is tuned to it. As we walk the paths around our neighborhood, we hear the one-of-a-kind voice. It's not always seen quickly or easily, but the calling out is clear and makes us stop, look and be awed.

It is of utmost significance that Christ's church recognize the unique and beautiful sound that God has spoken through Jesus Christ. This Gospel message of love beyond our wildest dream is true and for all. We must not let that message be muted by the sounds of the world or confused with other gospels that sound good. There is but one Lord and Savior. There is but one Gospel of grace. There is but one message for this congregation to cherish and to share.

As we are introduced to a new vision and mission/values statement, be assured that it flows from the message of Jesus Christ. The wellspring from which these statements come is that God is Light and that Light must be the light for us to see others who have not known or heard this beautiful Word.

Sometimes congregations can lose their purpose or path. They can be consumed by matters of little or less importance. The Light is God's promise to remind us again and again what we are called by Him to do.

I am grateful how God has richly blessed this congregation with more than enough resources to do His work. I pray that we will always be generous with that trust. I'm thankful for the dedicated and devoted staff who share the work and shoulder the responsibilities extended to us by our Lord and you, the congregation. Continue to pray for us.

I'm blessed to share this time of my ministry with you dear people. As another year passes by, and now it seems even more quickly, I will walk with you on the path that our Lord provides and in His Light that will show us the way.

God bless and keep you in His grace.
His servant and one of your pastors,

Craig Hanson
Lead Pastor

president's report

The 2008-2009 council set the following goals for this year:

1. Review the Vision Task Force recommendations on a quarterly basis and identify action items for revision and/or implementation.
2. Support ministry teams by establishing policies and/or documents that empower them to be effective in their purpose.
3. Work with staff and ministry team chairs to identify ways to preserve God's creation when making policy decisions and/or purchases.
4. Communicate, at a minimum of quarterly, with congregation, ministry teams and subcommittees to share information, policies and/or address questions.

How did we do?

On the Vision front, we helped to organize the rollout of the vision with the staff and the Vision Task Force. Additionally, we created a subcommittee to study opportunities for organizational improvement to support our new Vision, Mission, and Values. That group provided us with recommendations for consideration. We have acted upon their short term recommendations and created some new committees to support staff, council, and ministry teams in the areas of training and information technology.

With regard to supporting ministry teams, we worked with the ministry teams on the Vision, Mission, and Values, inviting them to our December council meeting, which was devoted wholly to having a discussion with them about it. Additionally, we facilitated budget discussions with the ministry teams.

Now, preservation of God's creation, we were very lucky to not be the only ones concerned with this. We started asking if our foodservice could reduce or eliminate its use of disposable plates and cups. Jean Odeen came to us with a proposal to buy a new set of reusable plates from the kitchen fund. We quickly moved to approve the spending. Then, the Facilities Planning Committee and our maintenance coordinator brought in the utility company to do an energy audit of our facilities. Again, the council was asked to endorse some spending, this time from the building fund, to support the cause of conservation, and, again, we moved to approve it.

Communication? Well, it hasn't been intentionally done each quarter, but we have been in front of you in a couple of ways regarding the Vision, Mission, and Values. I feel we did a good job communicating about the Vision, Mission, and Values, plus facilitating conversations about them after the sermon series.

We set goals and, while our outcomes weren't exactly what we had envisioned when the goals were set, our goals have shaped the council's actions this year. We thank you for the opportunity to serve you in this way. Hopefully we've met your goals too.

Peace,

--Robert Tomb
Congregation President

child care ministry

Sue Menier – Director of Child Care

On February 6th, we celebrated our 12th year anniversary! Each morning I walk in and am greeted with joyous hellos, warm hugs and lots of kisses- as little bodies wrap themselves around me! It's a great daily dose of God's love given to me through his most marvelous of creations, Children!

Every day we sing, dance, play, laugh, and pray. Many friends donate their time and energy, books, toys, quilters' blankets and pillows and even one of our own grandpas, Wayne Serkland, made little Adirondack chairs for the children.

We have added a new member to our staff this year, Jenny Carlson. Jenny comes to us with many years of experience. "Children are my passion" she stated to me. Those words were all I needed to hear to know she would make a perfect fit at R.L.C.C. so welcome Jenny!

Linda Borgstrom and Shama Dahal continue to grace our staff with their commitment to our ministry. Their warm hearts add so much light and life to R.L.C.C. each day.

This year we say goodbye to Julia McKay. Julia came to us as a three month old preemie weighing only 7 pounds, and this year she's off to kindergarten. Julia has touched our hearts like no other. Quote from Julia's mother Mary McKay, "You know what this daycare is all about? Hot Cocoa and Jesus". I loved that!

Chris Taylor our renter of the lower level of the house continues to clean for us, shovel our walks, remove our trash and even provides treats once in a while. Thanks Chris for all that you do.

Jan Harbour, church receptionist, buys donuts for our CHERUBS every Tuesday! Yummy thanks to you Jan.

In February we attended the E.L.C.A. Child Care Conference. We are always reminded of the positive roles we are playing in the lives of the children we care for. Thank you for allowing me to remain in this role.



hospitality ministry

Jean Odeen, Director of Hospitality
Colleen Hopple, Hospitality Assistant
Barbara Sander, Hospitality Assistant

A BIG THANK YOU:

- To the many volunteers that have continued to assist with the events at R.L.C.
- For the Custodial Staff for their support.
- To the Tuesday Work Crew.
- To the Youth families for their assistance with breakfast. Breakfast participation continues to grow, this year an additional 597 came to breakfast.
- To you for bringing guests to RLC

Special events

- Prime Time participation was down 10%.
- Funerals, we have served 3,163 lunches; which is up 40% over last year.
- Hospitality at R.L.C. is more than food. Love, worship, fellowship and caring for one another in many ways. To see and feel the bonding that goes on between volunteers cannot be measured.

We have made some improvement by purchasing new chairs and new dishes. "The coffee and food taste better now", people say.

The improvements were paid for by donations and sales of the old chairs and dishes. Thank you everyone for your help. This year we have served 18,116 meals, with an increase of \$8,341.00 in revenue. Detailed information is available by contacting Jean Odeen.

Blessings

quilters

Dorothy Arndt and Virginia Cronin

As in previous years, quilting is divided into two groups: The summer group makes baby quilts; this past year they donated 150 quilts to Children's Hospitals and Clinics in Minneapolis and St. Paul. Winter quilting meets from September to May. Many of the same people are in both groups and enjoy the change in quilt size and patterns of each group.

The remainder of this report pertains to the winter quilter group. The group has sent six quilts along with the mission group to Tanzania.

In November there was a quilt sale, the first in a number of years. It was held for three days and they earned over \$2,000. The sale profits were donated to the kitchen fund to help purchase new dishes for use at church functions. \$500 was also given to the food shelf.

During the year the quilting group gave about 10 quilts to people in need and sold about 13 more to people requesting them. Several people donated boxes of fabric and sheets to them. How blessed to have received this material! It was calculated that if the group quilted every day for the next 25 years, there would still be some fabric left! It is such fun sorting through fabric, deciding which fabrics go together! They never say "No" to donations!

On the final quilting day, the cupboards were emptied and divided as follows:

- 16 quilts for Lutheran World Relief
- 18 quilts for United Hospital in St. Paul for the babies
- 21 quilts for Bridging
- 20 quilts for Common Bond/Simpson House for those who are homeless

All in all, there were 168 quilts sold or donated. In September the group will begin again and hope to have new and old members joining. What a great time to work together, giving the fruits of labor to those in need!

Meanwhile, come join the summer quilters – June 10 and 24; July 8 and 22; August 12 and 19th, meeting from 9:00 a.m. to noon each day!

visioning task force

Jill Lund and John Shardlow

In January, 2008, the Church Council appointed a Visioning Task Force to assist them in developing a long-range plan for RLC. The Purpose Statement for this visioning process was: "Our community and our world are changing dramatically. The purpose of this visioning process is to explore how God may be calling Roseville Lutheran Church to serve and to minister in response to these changes."

Members of the Visioning Task Force were: John Shardlow and Jill Lund (co-chairs), Ralph Baumgartner, Kate Berg, Sandy Burwell, Chenar Howard, Geoff Kaufmann, Dave Lorenz, Bill Metzger, Jack Miller, Mary Peterson and Barb Yates.

Our visioning process involved research and analysis of changing conditions in our community and the world. This information was presented to the congregation at ten listening sessions held in the spring of 2008. The input from the Congregation was then summarized and presented to a large and diverse cross section of church leadership at a weekend retreat held at Luther Seminary in July, 2008.

Using the input gathered at the retreat, the Visioning Task Force drafted Vision and Mission statements and the church staff drafted a Values statement. The final statements were unanimously approved by the Church Council in October, 2008. These statements were presented to the Congregation during worship services in February, and members from the Church Council, the Visioning Task Force and the church staff were available to discuss these statements further during several Conversation Times which were held this past March.

Copies of the Vision, Mission and Values statements are available at the Welcome Desk or in the church office.

The Visioning Task Force again wants to thank members of the congregation for their ongoing prayers and support throughout the visioning process.

children's ministry

Chris Smedsrud

"But grow in the grace and knowledge of our Lord and Savior Jesus Christ. To him be the glory both now and forever! Amen."

2 Peter 3:18

It has been a year of growing and learning about the grace of Jesus Christ. We saw a new format with Cornerstone this year. One of the format changes was a monthly G.I.F.T (Growing In Faith Together) Sunday for all K-5th Cornerstone families. This allows parents and children to attend and discuss a topic together. This helps families with the growth of their faith.

We have also seen the love and stewardship of Jesus in the actions of the children of RLC. They have been able to touch the lives of many in our community and throughout the world. Just take a look at some of the things they have done:



- Operation Underwear collected 179 pair of underwear, 113 pair of socks, and 15 undershirts for families in need right here in Roseville
- Donated 121 cell phones to battered women's shelters
- Raked 19 lawns for Rake and Run in the fall
- 50 Care bags assembled and given to Family Place
- 90 Hospice Kits assembled and given to Global Health Ministries for distribution to African Countries
- Collected 737 books that were donated to various individuals and groups
- Collected \$1,300 through the Kids In Mission offerings. This money went to help KaRen refugees, organizations like Feed My Starving Children, and minister to shut-ins

The children of Roseville Lutheran Church have been a shining example of love and stewardship. Thank you for all the support you give them as they grow in the grace and knowledge of Jesus Christ!

"Teach a child in the way they should go, And when they are old they will not depart from it."

Proverbs 22:6

youth and family ministries

Jack D. Miller, Youth and Family Chair

Betsy Gilbert, Youth and Family Council Liaison

There is not enough room on this report to express the strides forward, the policies implemented, the programs executed and the dreams that are being dreamed!

Youth and Family (Y/F) has established three goals. That the young people to whom we minister

- 1.) Grow in their faith: They are at the point where the faith they have can no longer be their parents faith, but their own.
- 2.) To understand that they "belong" to larger community of believers.
- 3.) As believers we are here to serve. It is no longer that the world revolves around us, but Jesus Christ lives through us. It is our prayer that focusing on these goals will lead to responsible and maturing Christian lifestyles.

In the area of governance we have implemented background searches on all of those individuals who deal with the youth. We are implementing a structured Confirmation Training Course for leaders and their assistants who teach every week. There are events with strange names like RAW, FLOCK, Friday Night Live, along with the basketball teams (guys and gals), muffin mornings before school, confirmation classes, car washes, canoe trips, mission trips, sandwich sales, Sunday Morning Breakfast, and the list goes on.

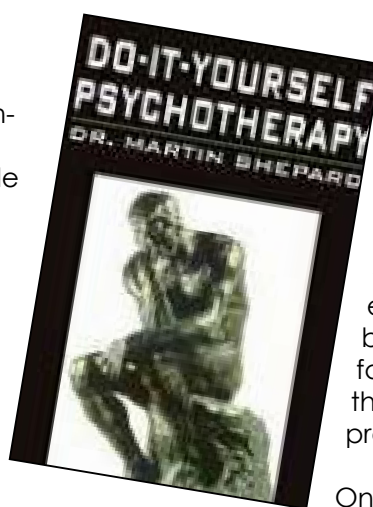
The need is great. We are not perfect, nor do we aspire to that purpose. We seek to be faithful and ready. To that end we serve the young people so that they can be whole persons in a broken world.



youth ministry

Dave Watson, Pastor of Youth and Family Ministry

I have always been a lover of books and, in more recent years, I have even begun to collect books. I have old family Bibles with family trees in the front, books of theology printed in the late 1800's, books of poetry and even a Bible printed in the 1950's with indulgences in the front (you know, the kind that Martin Luther wrote against 500 years ago).



Of all of the books I have collected over the years, there is one I really wish I knew the story behind its owner. I picked it up while I was on internship at South Canyon Lutheran Church in Rapid City, South Dakota. There was a book sale going on and I was rummaging through the stacks of books searching for interesting finds and I came across *The Do-It-Yourself Psychotherapy Book*. I could hardly believe my eyes when I found it, but there it was. Stamped in the front and on the edge of its pages was the name of the owner and even notes throughout its pages.

Part of what struck me about the book was the idea that psychotherapy was something that you could do on your own, like a "do-it-yourself" lawn and garden or kitchen tile project. For reasons that I will never know, the owner of this book perhaps believed that tackling his pain and emotional issues was something that was better to do alone, and that has always struck me as profoundly sad.

One of my greatest goals in ministry and for the youth and family ministry here at RLC is to help people, especially students, to realize that whatever they face in life, they don't do it alone. God is always present and God has given us the gift of one another. Life is not a "do-it-yourself" project, but God calls us to be in relationship with one another, especially in difficult times. Too often, it seems, Church becomes the place where people put on a good face and tell everyone that they are "just fine" while they are hurting inside and that has always struck me as profoundly sad.

One of our greatest goals in the youth ministry at RLC is to create a safe place where students can share their sorrows and joys, their pains and dreams, their doubts and their amazing faith and where they can hear the amazing grace of the Gospel of Jesus Christ, that God loves and values them enough to die for them... and all of this, they never need to do alone.

Come and journey with us in the next year and the years ahead as we work together, side-by-side, in the ministry that God has called us to in this place.

Peace

together we **celebrate** childrens ministry!

Kim Rehfeldt – Director of Children’s Ministry

Julie Hanson – Assistant Director of Children’s Ministry

CORNERSTONE—NURTURING AND EXPLORING FAITH

Throughout the year the Kindergarten through 5th Grade Cornerstone Kids explored Luther’s Small Catechism and the seasons of the church year. We tweaked our Cornerstone schedule this year to allow for more relational time for the kids and their shepherds. We also added a monthly study and fellowship time for the Kindergarten through 5th Grade Shepherds and a monthly G.I.F.T (Growing In Faith Together) Sunday for all Kindergarten through 5th Graders and their parents. During G.I.F.T. Sundays families reviewed the monthly Cornerstone theme and discovered ways to continue their exploration of the theme at home.

The preschool Cornerstone Kids explored who they are as a child of God and how much God loves them. Their shepherds led them in exciting activities and stories that captured their interest and imagination.



WORSHIP

Worship is an important part of all of our lives of faith. For children it takes on an additional significance when they have the opportunity to lead worship, not just participate in worship. Children’s Ministry offered three significant opportunities for kids to lead worship this past year.

In December, the Cornerstone Kids led worship by retelling the story of Jesus birth through scripture and song.

In February, 37 Kindergarten through 6th Graders led worship by presenting the musical “Nic at Night.” The musical told the story of Nicodemus and how we are born anew in Christ. More importantly than the presentation of the musical was the camaraderie that developed between the cast and crew through the weeks of rehearsal.

On Good Friday, a group of Kindergarten through 6th Graders retold the story of Jesus sacrifice for all through shadows and crafts. This worship is led entirely by the kids and is attended by people of all ages.



REACHING OUT TO THE COMMUNITY

Summer Sonsation, our Summer Day Camp Ministry, continues to be one of Children’s Ministries greatest opportunities to reach out to the community. Our enrollment in Sonsation is consistently two-thirds community children, many of whom do not have a church home. For many it is an introduction to the Christian faith and the church. We follow-up with these families after Sonsation and invite to explore the various ministries that RLC offers.

Julie and I continue to consider ourselves blessed as we serve in Children’s Ministry. We are energized by all of the people who have a heart for children and families and who serve in so many ways and touch so many lives. We are also blessed to do ministry with our colleagues on staff and those who lead our congregation. There certainly is much to “Celebrate Together!”

Yours in Christ

SERVING OTHERS

Throughout the year Children’s Ministry provided opportunities for kids and families to serve others and live out their faith.

The preschool Cornerstone Kids assembled Care Kits for and shared their gently used toys with Family Place, a Twin Cities homeless program for families. The Kindergarten through 5th Grade Cornerstone Kids collected supplies and assembled Hospice Kits for Global Health Ministries.

Children’s Ministry hosted its Annual Rake-N-Run Event in October and the 40+ participants raked the yards of 19 homes in two days of those unable to rake.

Children’s Ministry also collected underwear for various Twin Cities groups serving those in need through Operation Underwear.



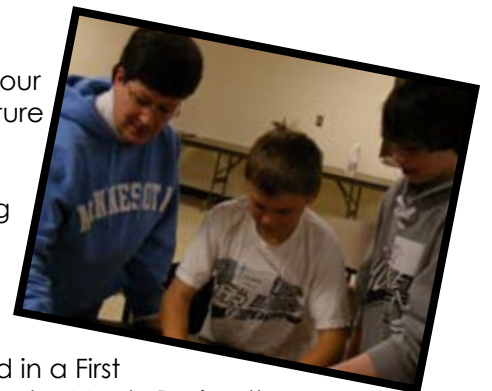
MILESTONES IN FAITH AND LIFE

Throughout the year we recognize significant milestones in a child’s faith journey and encourage them to explore their faith with new eyes.

We presented our 2 year olds with the “Beginner’s Bible” to encourage them and their families to begin exploring the scriptures together.

In September, we presented our 3rd Graders with the “Adventure Bible.” This Bible excites kids about digging deeper into the scriptures and discovering what it means for their own life.

In March, the 5th Graders and their families participated in a First Communion Workshop and Seder Meal. During the workshop they explore the scriptural background of the Lord’s Supper and the Lutheran understanding of this sacrament. They also bake the bread that is used for Maundy Thursday worship.



On Maundy Thursday, the First Communion recipients and their families participate in a Seder Meal, a symbolic meal of the Passover Meal Jesus shared with his disciples before his arrest. Following the meal they join in the Maundy Thursday worship and partake of their First Communion.

health and caring ministry

Doreen Kapfer- Parish Nurse

One of the teachers of the law came and heard them debating. Noticing that Jesus had given them a good answer, he asked him, "Of all the commandments, which is the most important?"

"The most important one," answered Jesus, "is this: Hear, O Israel, the Lord our God, the Lord is one. Love the Lord your God with all your heart and with all your soul and with all your mind and with all your strength. The second is this: Love your neighbor as yourself. There is no commandment greater than these.

Mark 12: 28-31

Jesus is our teacher, our example, our Lord. With focus on God and His strength we continue encouraged to do what we can to serve others and care for ourselves in a 'whole' way. Jesus told us to love God, to love our neighbors, and in the example of loving others, we understand that we are to love ourselves. Through these instructions, we step forward in strength to continue walking the journey put before us.

Health Ministries has tried to be faithful on all aspects. We love the Lord by including devotions and prayer in all we do.

We incorporate caring for others through the ministries of the Care Team, Prayer Shawl Ministry, Transportation Ministry, Cancer Support Group, Spiritual Care Visitation Ministry, Faith Partners, Military Support, Grief Support, and Homebound Connections.

We show care for ourselves through excellent exercise opportunities: Faithfully Fit Forever, Yogadevotion and EnhanceFitness. We also feed ourselves with educational opportunities such as our health fairs, CPR classes, Boundaries classes and others.

Next year, with the help of the Parish Nurse Advisory Team, we will focus on these Mark 12 verses and roll out a challenge to the entire congregation to grow through intentional development of healthier habits.

I sincerely thank all of you that I have been privileged to work alongside in Health Ministries areas, serving God. It is a blessing to be able to see God at work in you and through you. Onward for the glory of God!



Faithfully Fit Forever – senior exercise classes that incorporate aerobics, stretching, weight strengthening,

balance exercises and stretching with a lot of fun. Our instructors are the best! Dee Abrahamson and Marilyn Steinwall from RLC!

Yogadevotion – yoga in a Christian format, taught by a Luther Seminary graduate and certified by YogaFit. This is a good way to benefit body, mind and spirit

EnhanceFitness – offered here through a UCare program is a group exercise class series featuring cardiovascular conditioning exercises, strength training, and balance routines that help improve flexibility, bone density, and stability.

Cancer Support Group – an open and casual support group for anyone that has experienced cancer themselves or with a loved one. Heidi Wilfer and Cheryl Szabo have been facilitating this group.

Faith Partners – With educational opportunities provided by this group as well as our recent Recovery Sunday (with the drama/monologue), this team works to provide education and referrals for support and help in the field of addiction and recovery.

Emergency Preparedness – this team has done significant groundwork to prepare our church for responding to a disaster

Parish Nurse Advisory Team – Jan Biebl, Naomi Miller, Jill Peterson work with Doreen Kapfer on planning, prioritizing and decision making for Health Ministry growth. This small team put on the Health Fair last September

Military Support – Bud Helmen now is connecting with and sending correspondence to our military members that are deployed. We also have sent them prayer shawls and newspaper updates and are planning to increase our connection with our military families.

Transportation Ministry –

Dale Harbour has been working with a team of 4-5 others arranging transportation for our members who need rides to church, medical visits or other appointments.



Homebound Connections – Devotions, brain working puzzles and articles of interest are sent by Jan Harbour to our members that are homebound and not able to attend church.

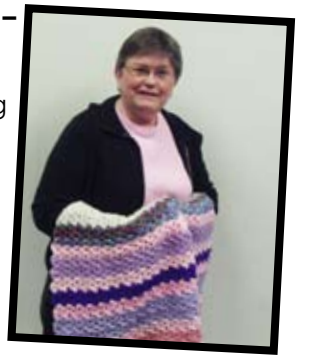
Spiritual Care Visitation Ministry Team – These folks bring communion, sharing of scripture, prayer and a friendly visit to those that cannot get out to church.

Care Team – with ongoing leadership from Corinne DeLaitsch and Carol Solie - provides housework assistance, chore help, friendly/supportive visits, transportation to medical appointments and errand help. We are in our 11th year of providing this type of support at RLC.

Grief Support – Growing Through Loss is a series of professionally led education sessions and support groups that is offered at different times of the year in rotating churches. Through this collaboration we are able to have effective grief support available to our members. Priscilla Johnson sends encouraging cards of remembrance to those who have had losses.

Prayer Shawl Ministry –

Pam McCulloch and Cindy Bjerk brought together this amazing group to pray and knit or crochet prayer shawls. The shawls are physical evidence of God's love and our member's prayers. They have prayed and made well over 100 shawls that have gone out to church members. They have also sent shawls to outside recipients including the Amish and Virginia Tech after their communities were impacted by violence, an inner city ministry, our military men and women and to a Care Center



Bloodmobile – With a heart for the Red Cross and the need for blood donations, Ann Taylor has been coordinating the bloodmobiles and has increased the frequency of them. This translates into more lives saved.

Medical Equipment Loan Closet – wheelchairs, walkers, canes, crutches, bedrails, shower benches.....if we don't have what you need, we probably know where to send you! Our medical equipment Loan Closet is available to anyone with need and items are coming and going all the time.

Flu Shots – Last year was our biggest year ever with flu shots here at RLC. With staff from the Minnesota Visiting Nurse Association, we had 148 people receive flu shots on Flu Shot Sunday!

facilities ministry

Facilities Planning Committee (FPC)

Geof Patterson

With the adoption of RLC's new Vision, Mission and Value Statements, the Facility Ministry Teams made up of Facilities Planning Committee (FPC), Design, Color and Building Continuity, and Site Beautification Team has a more clear focus, along with the rest of the congregation. FPC exists specifically, as a committee reporting to the Congregational Council, to support Ministry at RLC with functional, inviting and spiritually expressive spaces. Until the new Vision was unveiled, it was difficult to do much long-range planning for the facility. A "plan" for a Facility Master Plan has been worked on for several years, but had been relegated to the back burner without an idea of God's plan for us. FPC will re-introduce its recommendations regarding the future of our physical surroundings to Council at the May council meeting. We will keep you informed.

You may have noticed some of the changes to our church home that have been accomplished this year. Some are less noticeable than others-here are a few examples:

- 1) An energy audit was performed and items highlighted by Xcel Energy are being instituted in order to save thousands of dollars annually on energy costs.
- 2) The roof has been replaced on the "82 Building" area that houses the staff offices and the North Lobby.
- 3) Plans were developed to upgrade the classrooms used for the 10:10 Hour with face lifts and new technology installed .
- 4) The Worship Center and Commons were painted and freshened up.
- 5) Bulletin boards have been replaced.
- 6) Wonderful new landscaping around much of the church.

Site Beautification Team

Helene Schmidt

This past year the Site Beautification Team continued its mission to renew and beautify the landscaping at RLC. A great team of committed people worked on the weeding and the general maintenance, as well as the project of updating the slope on the north side of our sanctuary. Fourteen hundred retaining wall blocks, a dump truck full of black dirt, over 40 shrubs and plants and 17 yards of shredded mulch later, the slope has seen a definite improvement. This year we plan on finishing the project by redoing the very top part of the slope which did not get done last fall. There will also be the need for another load of mulch to be laid both on the north slope and some top dressing of the walled area between the 69 building and the south parking lot.

The flowering crabs in the south parking lot were pruned in March. They will continue to need minor pruning for the next couple of years so that the trees will have a good branching structure and not be susceptible to breakage under heavy snow or ice. SBT is committed to becoming as green in landscaping at RLC as possible. Loosing a number of the flowering crabs in the parking lot islands was due to use of salt (for safety) in the winter months. With 'going green' in mind the possibility of installing a couple of bike racks into the more eastward parking lot islands where the crab trees died and have been removed is being researched. We know there would be people who would use these racks instead of their cars as long as they had a safe place to park their bikes.

We encourage anyone interested in joining our team to do so. We get together to work and have no meetings. E-mails go out to announce a work day, the turn out has been wonderful, and best of all we have a good time and fellowship while we work. Contact Helene Schmidt or anyone on FPC (FPC@RosevilleLutheran.org) to be included in future landscaping projects.

A HUGE thank you to all of our present group who have been absolutely the best and the hardest workers anyone could ask for. We hope to see all of you back for another good year.

FPC thanks our maintenance staff, the Design, Color and Continuity Team, the Site Beautification Team and Adult Ed for spearheading these projects. As always, thank you to the Tuesday Work Crew for all you do at RLC. Thanks also to the people who continue to contribute to the Building Fund, which pays the mortgage and provides funds for capital expenditures like those noted above.

The Facilities Ministry Teams of FPC, Design, Color and Building Continuity (DCBC), and Site Beautification Team (SBT) welcome any comments or suggestions. Members of the Facilities Planning Committee are Phyllis Beaudette, Scott Cordes, Sherri Koehntopp (Member Emeritus), Vicky Lorenz (Co-Facilitator), KJ Olson (Co-Facilitator), Geof Patterson (Council Liaison), Brian Tempas and Jeff Tonkin. You can email us (fpc@rosevillelutheran.org) or send correspondence to us at the Church Office. Please consider volunteering in the Facilities Ministry or contributing to the Building Fund.

Design, Color, & Building Continuity

Sue Metzger



Here are a few highlights of the year:

- 1) In May 2008 the services of an interior design firm were engaged to help select a color palette and details for visual enhancements throughout the interior of RLC. This followed by hiring a professional painting company (Pro-Touch) to paint interior walls in the Sanctuary, Commons and hallways during the month of August. Scripture verses were installed, selected by our 3 pastors, to 2 walls in the Sanctuary and 2 walls in the Commons area.
- 2) In December the installation of art glass in the south facing windows of the Sanctuary were completed as a memorial to Skip Borgstrom from his family. The DCBC committee worked closely with the family in selecting the colors and images
- 3) Worked with the Ministry Teams and staff when issues of color and design were involved.
- 4) Teamed with Mission & Outreach on a better display area and bulletin boards
- 5) Currently working with Adult Ed as they plan a renovation of several Adult Ed classrooms and the upper level lounge. Researching new floor covering for all areas of RLC in need, and assisting with the selection of new chairs for Adult Ed classrooms and other spaces.
- 6) A 'Gift Book' is in the development stage where ideas for special giving, memorials, etc. are documented for future ease of reference.

DCBC continues to look for ways to enhance the spiritual and contemplative worship and meeting experience at RLC. Suggestions or comments are welcome.

**Special
Edition**

SUMMER 2009

Roseville Lutheran Church Newsletter

**2009
spring**



stewardship **RUN**

5k run, 3k walk/roll

*Sunday June 14th 10 a.m.-start
worship times will follow normal schedule*

The **Spring Stewardship RUN** has become an annual tradition here at Roseville Lutheran, now into its third year. Each year the RUN has grown in communicating the message of stewardship and in the numbers of people participating. It's taken awhile for everyone to see themselves as "runners in faith" but now, it's starting to catch on. The infants at the baptismal font, receiving their new running shoes to our most senior of members filling out a RUN registration form, are seeing themselves as "runners in faith."

Someone visiting from another church after seeing a baptism and the information at the RUN registration table commented "You should market this idea." Well, we wish we could take credit for the idea but the Apostle Paul used the analogy almost 2000 years ago when he was speaking to the early Christian church*. That message, our message is pretty basic: life is like a run, a race or a marathon. In that run of life we encouraged everyone to run faithfully in response to God who abundantly provides our every need. Out of that message we have developed three RUN goals.

- 1.) For everyone at RLC to see themselves as "runners in faith." As runners we train daily and grow stronger in faith.
- 2.) To experience the "race set before us" as a way of life that seeks meaningful ways to serve God and others faithfully.
- 3.) Every runner would share a financial gift that reflects their desire to "finish strong!" doing their "P.B. - Personal Best!"

If you haven't registered for the official "2009 RUN - walk & roll" Sunday, June 14 at 10:00 a.m. you can do so online at RosevilleLutheran.org or in Luther Commons on the weekends. Remember, we need "RUN - walk & roll" support team volunteers as well. Registration is necessary for every individual and for all ages. 2009 RUN "collector's edition" T-shirts are again available thanks to a several generous sponsoring gifts. 2009 RUN T-shirts will be available at the "Carb UP Night" Saturday, June 13 at 6:00 p.m. and the day of the RUN. All RUN offering gifts will need to be received by Monday, June 30, 2009. Thank you for doing all that you can do.

In these coming days, please hold the "runners in faith" at of our church in prayer. Read the scripture verses that have are the bases for our theme and let that word dwell in you richly. Be an encourager of others in faith, helping all of us achieve the goals we have set before us and remember always it is Christ who is our example.

* Theme based on - Hebrews 12:1 -12 and additional support verses - Acts 20:23-25, 1 Corinthians 9:24-27, Galatians 2:1-3, Philippians 3:12-14, 2 Timothy 4:6-8

CARB UP

...for the RUN and just for FUN!

Spaghetti Dinner
Saturday, June 13th, 6:00 pm
Church Social Hall

The Annual Meeting of Roseville Lutheran Church Sunday June 28, 2009 at 10:00 a.m.

- Approve minutes from last years meeting
- Elect new lay leadership
- Approve annual budget
- Receive reports from the President and Lead Pastor

NEW COMERS ORIENTATION

August 5 & 12, 2009 at 7:00 p.m.

*Childcare is provided –
please call for a reservation.*

Welcome of New Members

Sunday, August 23 at 11:00 a.m.

Welcome Brunch for new members and their families:

10:00 a.m. Social Hall Stage

Anyone interested in finding out more about the mission and ministry of Roseville Lutheran church is invited to attend.

Welcome Desk or call Pastor David Hason at 651-487-7752

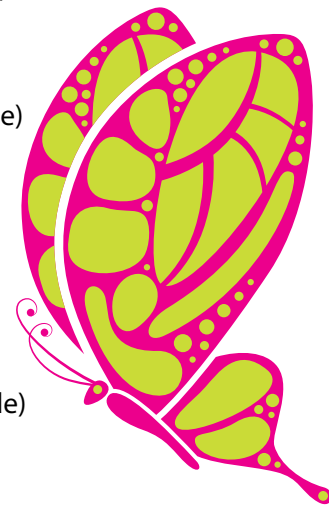
Summer Son-sation is our summer day camp ministry for 3 year olds through young people who have completed 6th grade. The week long camps meet Monday through Friday from 9:00 a.m. to 12:00 p.m. Camp costs range from \$30.00 to \$60.00 for the week.



There are openings in camps for those who have completed Kindergarten through 6th Grade. (All of the camps for Preschoolers are currently full.) Register at the Children's, Youth and Family Ministry Desk or mail your registration to Roseville Lutheran Church, 1215 W. Roselawn Ave., Roseville, MN 55113. Brochures with complete camp descriptions and registration forms are also available at rosevillelutheran.org.

The following camps have limited openings:

- Strum & Hum I (K-6th Grade)
- Strum & Hum II K-6th Grade)
- Someone's in the Kitchen (K-2nd Grade)
- Stitch A Stitch (3rd-6th Grade)
- Give A Hoot – Love the Earth (3rd-6th Grade)
- All God's Critters (K-2nd Grade)
- Awesome Adventures (4th-6th Grade)
- Playing Around (K-2nd Grade)
- Silly Sports and Goofy Games (2nd-4th Grade)
- Lights, Camera, Action! (3rd-6th Grade)
- Look-See-Do (K-2nd Grade)
- Artist Within (K-3rd Grade)
- Kids In Mission (4th-6th Grade)
- Around the World (K-3rd Grade)
- Shutterbug (1st-6th Grade)
- Fun In The Sun (3rd-6th Grade)
- Sailing, Sailing! 4th-6th Grade)
- Can You See What I'm Saying? (2nd-4th Grade)



YOUTH & FAMILY

Hiawatha & Mt Rushmore

Hey everyone, this is your last chance to sign up for Camp Hiawatha (July 5-10) or the Middle School Mission Trip to Mt. Rushmore (July 26-Aug 1)!!! Deadline to sign up for both trips is Sunday June 14th. Registrations can be found at the Children's Youth and Family Desk. Contact Neal Cannon for more info.



Incoming Middle School Fun Day!

All students going into the 5th and 6th grade (for the 09-10 school year): We are inviting you for kickball, crazy games, delicious food, fun and much more. Our party will be on Friday June 5th from 6:30-10:30pm here at RLC! Contact Neal Cannon (ncannon@rosevillelutheran.org or 651-487-7752x235) by June 4th to sign up. It will be a great opportunity to get familiar with the middle school youth group at church, so I hope you all can make it!



SPONGES

I've heard a lot of people say things like, "Kids today aren't like they used to be," and I would like to respectfully disagree. Most of the kids I know are like dry sponges, soaking up the world around them. What has certainly changed is the culture & information sharing process

that kids are soaking up. Kids are flooded with information, beliefs, and opinions everyday and are struggling to find a sense of self in the midst of everything else. More often than not, these thirsty sponges turn to the internet, TV, and celebrities to get a drink of identity.

This identity must help them make sense of the world. Thus, this search that youth go through encourages me because as a follower of Christ, I believe that we have an identity that does all this for us. Our faith leads us to living water and quenches our deepest thirst. It allows us to come as we are and to be a part of something that is bigger than the individual. This makes our job simple as Christians. We must be guides for the next generation, leading youth towards the waters of Christ.

As the school year comes to an end, I want to thank all those who spent time with RAW, Confirmation, Friday Night Live, Flock, Bagels at Dawn, and everything else that goes on, thank You for bringing our kids to living water and thanks for great year.

– Neal Cannon

RLC NEWS

Sojourners Small Group Ministry

The Sojourners Small Group Ministry began last fall, meeting every other Tuesday evening at Caribou Coffee. During the fall we studied "Our Potential in Christ," a study in Galatians, Ephesians, and Philippians. In February we began another study called, "A Long Obedience in the Same Direction, Discipleship in an Instant Society," by Eugene Peterson. The group grew to 7 people by March, and we supported each other, sharing our spiritual lives and how we relate to our vocations, society, and others. Friendships have grown within the group.

Sojourners will meet again this coming fall and we will be studying Rick Warren's "Purpose Driven Connections" magazine with small group video material and articles that challenge our walk with Christ. We will meet every other Tuesday evening beginning after Rally Day at the church. Sojourners is facilitated by Dot Probst and Howard Sorenson.

Looking for a Fun Foursome to Compete Monday, August 3, 2009

Midland Hills Country Club - Roseville, MN
11:30 Registration & Lunch, 12:30 Tee times

GET A FOURSOME TOGETHER,
or we can pair you with other golfers.
\$225 Individual, \$900 per Foursome
SPONSORSHIPS AVAILABLE!!

Questions or RSVP to eseiber@lyngblomsten.org
Emily Seiber, Annual Fund & Events Specialist
(651) 632-5323



Summer Faith Story

The RLC Children's Good Friday craft was a blessing to kids who made it and far beyond! It was a lovely cross with several other symbols of the Good Friday and Easter story embedded with in.

That afternoon a neighbor girl was over playing with my children. She saw the cross and asked what it was for. I told her it was a Good Friday craft from Roseville Lutheran Church. She asked, "What is Good Friday?" I told her Good Friday was the day Jesus died on the cross. She told me she only goes to church on Easter, Christmas, and when her Grandma comes to visit. We spent the next 45 minutes reading the hand out that came with the craft describing what each element represents in the Easter story.

Since then our neighbor and her younger sister have come to Sunday school twice with my children at our church in Lakeville. On Mother's Day they brought their mom to church too! The evangelism created by that children's craft has reached far beyond the walls of RLC and is making a difference in Christ's name!

Do you have a personal story of suffering, hope, or blessing that you would like to share with us? Please email communications@rosevillelutheran.org, or bring a copy in to the church office. Please let us know how we might pray for you, and weather or not we may share your story with others.



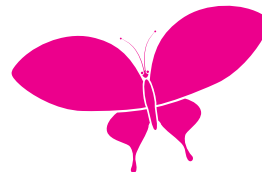
ROSE ENKAS

Summer Schedule

June 20 11:30 a.m.
Old Country Buffet
2480 Fairview Avenue

July 18th 11:30 a.m.
Red Lobster
2330 Prior Avenue

August 15th 11:30 a.m.
Perkins
3855 Lexington Avenue



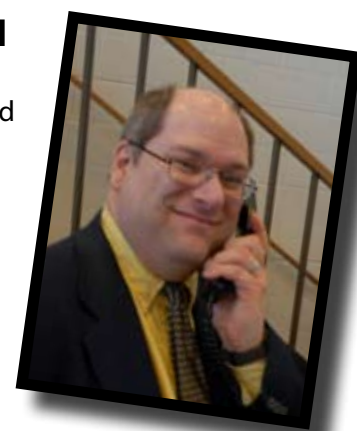
Congratulations Addy Murtaugh

The Saint Paul Division of Parks and Recreation announced the annual Golden Bloom awards this spring. Member Addy Murtaugh was awarded with a Golden Bloom Award for the Art In the Garden category. Addy's love of plants extends beyond her own home – she can be seen at RLC watering and caring for our potted plants around the church. Well deserved!



Welcome Desk Farewell

David Booms has worked at making people feel at home and informed at the RLC Welcome Desk. We are all so grateful for his hard work, as May was his last month in this role. THANK YOU DAVE!!



MISSION & OUTREACH

This summer, RLC has the privilege to host a **youth intern - Eva Janotova** from Martin, Slovakia. She will be actively involved with all the youth programs offered through RLC this summer. We will introduce Eva during the services on the weekend of June 13th and 14th. If you are interested in assisting with meals, weekend outings, or other assistance over the summer – please contact Mary Schultz at 651-644-1534 or KJ Olson at 651-636-6842.

RLC is planning another trip to our **companion congregation in Tanzania**. Once the dates for the 2010 mission trip is set, David Dudley will have an information session regarding this mission trip. If you are interested in this mission program, please contact David Dudley at 651-489-7243.

Our **Missionary Pastor Dana Nelson** from Lima, Peru will be at Roseville Lutheran on Sunday July 19th. She will preach and present information regarding her mission field during the 9 and 11 AM services. Please plan to come that weekend to hear how God is working through Pastor Nelson to reach the people of Peru.

Motorbike Arrives in Ng'ang'ange, Tanzania

Transportation is difficult in Tanzania, particularly in the region around Roseville Lutheran's companion congregation in Ng'ang'ange. During RLC's mission trip to Ng'ang'ange last October, the group announced a gift of a motorbike to be purchased with contributions from individuals at RLC. Things often take longer than expected in Africa, but the motorbike has finally arrived at the parish. It will be used by lay evangelists who travel on muddy dirt roads to lead worship services at small chapels called preaching points. Thanks to everyone who contributed last year to make this gift possible. Plans are underway for another RLC mission trip to Tanzania sometime in 2010.



A Hosting Experience

The Hospitality Center for Chinese is currently looking for families who would like to host a new Chinese student in July or August. If you have an extra room in your home, **could you prayerfully consider a hosting experience?**

Being a host family requires 4 main commitments:

- 1.) Meet your Chinese student at the airport.
- 2.) Provide him/her with a room and basic hospitality for 1-7 days.
- 3.) Assist as you are able and as needed, in transportation, getting a cell phone, opening a bank account and finding an apartment.
- 4.) Pray for your student.

The Hospitality Center for Chinese will support you in this endeavor, such as helping with transportation! If hosting is even a remote possibility for you, we would love to talk with you and answer any questions you might have. Contact Phyllis at 651-639-8226 or email phyllisose@juno.com. For more info about this ministry to Chinese, visit www.hcchinese.org.



Have Old Furniture?

The Hospitality Center for Chinese is also looking for gently used furniture donations, to give away to Chinese students and families. If you have furniture you'd like to donate or would like to help with furniture distribution, please let us know! Items that are most needed include: beds, desks, chairs, and tables. Contact Peter at: 651-659-9740 or email peter@hcchinese.org to donate. For more info about this ministry to Chinese, visit www.hcchinese.org.

mission and outreach

David Tetzlaff, Chairman – Mission and Outreach Team

Go therefore and make disciples of all the nations, baptizing them in the name of the Father and the Son and the Holy Spirit. Jesus
-Matt 28:19

It has been an exciting year for the Mission and Outreach Team. RLC continues to be a tithing congregation with 10% of the general receipts designated as our First Fruit Giving. Our team strives to use these funds to support our Missionaries, local and international organizations.

A great opportunity presented itself this year for the Mountain of Love food drive with matching funds from Mission and Outreach and RLC members. This year the Mountain of Love was a huge success as we raised 4,300 lbs of food and \$11,000. Keystone Community Food Shelf appreciates all that Roseville Lutheran does to help the hungry in our community. As financial strains continue to afflict our members and community, RLC will be trying new programs in 2009-2010 to increase our food ministry at RLC. If you are interested in working with the food ministry programs at RLC, please contact me at 651-365-6303.

The 10:10 hour has been a great way for Mission and Outreach to expose RLC members to the organizations supported through Mission and Outreach. We have a busy fall schedule with presentations by Operation Bootstrap Africa, Bridging, Vision Slovakia, Loaves and Fishes, Kenyan Congregation at RLC, and Keystone Community Services. Please use these opportunities to learn how RLC and you can impact the lives of people in our community.

This summer, RLC will have its first youth worker intern from Martin, Slovakia. She will be actively involved with all the youth programs offered through RLC this summer. Vision Slovakia has expanded from a building project and yearly mission trips to now we are impacting the lives of our youth with a Slovakian intern.

While your financial gifts help RLC in its outreach efforts, money alone cannot spread the Word of God in our community. While your financial gifts are necessary, there are other ways to reach out to grow in our Faith and Service to the Lord. I encourage every member to seek out a ministry they are drawn towards and to make an effort to get involved personally. Mission and Outreach would love to help members build a personal relationship with an organization they feel God is calling them to support.

Yours in Christ



stewardship committee

Don Sandborg

Although the Stewardship Committee has focused on two main annual events, stewardship is very much a year round part of our lives and our relationship with God. It is not only about how God can help us manage our finances, but how to be better stewards of our time, talents and all the resources of our planet.

In the fall we had our month long Consecration event, running through October and ending on the last weekend of the month. The focus was on learning how our giving is a part of our relationship with God and a commitment we prayerfully make, write down and present to God at the Consecration Weekend Celebration service. It was estimated from the commitments made that we could expect giving to increase about 2%. In spite of a struggling economy this estimate has been reasonably accurate. We thank God for the resources our members and friends bring to RLC to do God's work, ministering within our church, our community and even reaching around the world. Many people are blessed from the generosity of our members and friends.

To close out the church year we give thanks and recognize all the ministry work of RLC with "Celebrating Together". We emphasize each of our ministry areas for a weekend over the six weeks leading up to the Stewardship Run, Walk and Roll in June. This third annual event is becoming a fun and growing community building event. This is a time to rejoice over the ministry we have been able to do this last year, as well as prayerfully consider where the fruits of our Vision Taskforce are leading us. We close this financial year with a strong finish and seek to discern what ministry growth is possible with increasing support for a growing RLC ministry plan.

*Responding to a God of abundance,
creating a culture of generosity."*

- RLC Stewardship Mission Statement.

Giving – Why do we give? Why do you give?

It's a good question and worth our time to think about it. Some of us give because we always have. It is what we learned from our parents. Some of us give because we know we should or we feel an obligation to support our church and its ministries. These are good, but even better is to consider what God has to say about giving.

The practice of giving the tithe (tenth) goes back hundreds of years before the time of Moses and before the Old Testament Law to the time of Abraham (Gen 14) and Jacob (Gen 28). The importance of giving our tithes and offerings is important enough for God's people that he has it woven through His word from Genesis through the Old Testament, the Gospels and Paul's letters. In the gospels Jesus affirms the practice of tithing (like Mt 23:23), but emphasizes the need for mercy, justice, faithfulness and love. God clearly wants us to be cheerful givers; to give what we have decided in our hearts (2Cor 9:7). First fruits giving was always the first and best of the crop, or herd or whatever was being tithed. It's hard to be a cheerful giver if you have already spent 90% of what you have for the month, you haven't yet given all your offering to the Lord and you still have a week to the end of the month. For me our Simply Giving program is a wonderful way to manage this. Its done right up front, automatically, first fruits and can be changed anytime, if necessary, with a phone call to the RLC office.

Throughout the Bible, giving our tithes and offerings has been associated with abundance and blessings and especially in the New Testament the joy of giving. It's part of our relationship with God. If we don't learn to be faithful, generous and cheerful givers to God's work are we missing out on an opportunity; a fuller, more complete relationship with Him? If we prayerfully bring God into our finances do you think he could help us figure out how to be a better steward of what we have; how we could work better and smarter at what we do; to use what we have more wisely and to increase our potential for other opportunities and blessings? Well, you can answer that for yourself, but for me I am convinced that including finances and giving in my relationship with God has blessed me abundantly and like the old saying says, "you can't out give God". He is a God of abundance.

senior high ministry

Megan Moroff – Director of SR High Ministry



Boundary Waters Trip – 20 youth and Adults traveled to Camp Vermilion in northern Minnesota to spend a week of paddling, portaging, and camping in God's beautiful creation. We canoed, swam, ate great food, saw all sorts of wildlife, enjoyed picturesque campfires, soaked up gorgeous

sunrises & sunsets. We also grew – as confident young individuals, closer to one another as friends, and in our relationship with God. Voyageurs Lutheran Ministry did another amazing job of guiding our Christ-centered adventure through the Boundary Waters, and we look forward to going back again this summer!

Charismata Service Trip – In October, RLC's youth leadership program volunteered to head north to Two Harbors and spent the weekend helping to build the Lake Superior Hiking Trail. Several senior high youth camped on the shore of Lake Superior and worked hard from dawn 'til dusk to clear almost 2 miles of trail. We also had time to explore the shore, journal, cook over the fire, sing camp songs, and use the gifts God has given us to build something people will be able to enjoy for years!



Senior High Lock-In – This year we had over 60 students at our Senior High Lock-In, one of the largest Senior High gatherings Roseville Lutheran has seen in years! We had the world's largest 6-square tournament, played dodge ball & basketball, watched movies on the big screen, enjoyed food cooked by amazingly generous RLC parents, and of course, stayed up all night!



Fall Retreat – 15 youth traveled to Camp Hiawatha, outside of Grand Rapids, Minnesota for a fun filled weekend of games, songs, bonding, bible study, campfires, sauna-ing, and the chance to get away and rejuvenate in God's great north woods. Our students at RLC are so busy, it was awesome to escape to the woods for a weekend and reconnect with friends and with God!



Augsburg College Church Youth Basketball League – This year RLC rostered a boys high school basketball girls basketball team. Coached by our RLC youth directors, students enjoyed spending Sunday afternoons with their friends, playing teams from all over the Twin Cities. Our youth not only participated in a competitive and fun basketball league, but they learned about Christ through pre-game devotions & prayer and grew closer as a team throughout the season.



Flock – Our inaugural year of RLC's new senior high youth group, Flock, was a huge success. Thank you to everyone who made it possible and to all the youth who came! Every week we did something different, from playing ultimate, to watching nooma videos, to baking cookies, to having candle campfires, to girl talk, to bible studies, to dropping off

May Day baskets, to having Thanksgiving potluck, to The Amazing Race! The list goes on, and what an amazing list it is! It was such a fun year, and the best part was that it was all in the name of our awesome Creator.

Bagel's @ Dawn – High School students love sleep, but ours obviously love bagels and hanging out with their RLC friends! One of our most well attended senior high activities, B @ D asks students to meet an hour before school every Thursday to share bagels & conversation. The Saint Paul Bagelry graciously hosts about 20 youth & RLC staff every week. What a perfect way to start the day!

congregational growth and outreach

David W. Hanson – Pastor of Congregational Growth & Outreach

It was a few years ago, about this same time of year that we went to a gathering of thousands of lay people, church workers and pastors. There was a great deal of excitement and anticipation as the worship band and singers began leading us in opening worship. The host pastor came out on the stage and welcomed everyone and made note that there were registrations from all over the country and international churches too. It was a quite a moment!

The room then darkened and they showed a video interview with a volunteer named Millie. She said "People always question me when they hear about all the time I spend volunteering at church, especially when they hear that I don't get paid for those hours." She then humbly said "I was paid a long time ago when Jesus died for me on the cross."

It wasn't a highly produced video or some actor who learned the lines. Millie was a real honest-to-goodness volunteer who was telling us why she chooses to serve in the church. Her reason put the rest of us to shame, because sometimes it's easy to forget why it is that we serve.

It's a privilege to serve God here at Roseville Lutheran Church with all of you. In this last year, I've had my eyes opened to many "Millie's" female or male who's purest motivation for serving is because of what God has done, is doing and will do in Jesus Christ. I am humbled every time I meet a "Millie" and I'm renewed to serve with the same joy. The redemptive potential of the church rests in volunteers and servants who have that same motivation.

10:10 and Adult Education has grown in this last year because of volunteers who faithfully serve on the Adult Education Ministry Team. 10:10 opportunities have increased because of interested

people who want to learn and grow in their faith. Small Group Ministry has multiplied because of people who are seeking faith based relationships around a topic of similar interest. "Can we start a group" asked a young couple. "Yes!" was the answer and they did. Together, there are a multitude of reasons but the single most important reason is because "I was paid a long time ago when Jesus died for me on the cross."

Without a doubt, those who bring a gift for the Sharing Tree, a bag of food for the Mountain of Love or fix furniture at Bridging do so because of their experience of Christ's love. One "Millie" walked up after hearing a 10:10 opportunity about our Operation Bootstrap school in Tanzania and forcefully said "They have to have a new well for water – we can't let those kids go on like that." He will find a way, maybe not today or tomorrow but before the end of this next year I'm betting that well will be funded and he'll have a dozen other excited about it with him.

Most days, I have the same routine. I come to church, park in the back row and walk towards the church door. As I walk, I look up at the cross on the Worship Center and say a prayer, "Thank you Lord, for the privilege to serve and for those who I serve beside ... surprise me!"

Humbly in Christ's Service

music department

John Helgen – Director of Music Ministry

Make a joyful noise to the Lord, all the earth. Worship the Lord with gladness; come into his presence with singing.

– Psalm 100

Another year of music in ministry has come to a close, and it was a good year!

Many, many thanks to the many, many musicians of RLC - singers, ringers, and players of all ages and descriptions – for their participation in music and worship this year. You are the people that make it all happen. It's a pleasure to work with you as we lead the congregation in song and add great variety and enrichment to our worship.

At present, we have four vocal groups (Senior Choir, Junior Choir, Children's Choir, Marys and Marthas Choir), two handbell choirs (Jubilate and Bells of Praise), three Praise and Worship ensembles, the RLC Brass ensemble, and the RLC Jazz ensemble. These ensembles rehearse on a weekly or semi-weekly basis and are all involved in our worship services as well as other events. In addition to these groups, a large group of individuals serve regularly as vocal and instrumental soloists, cantors, accompanists, and ensemble members for a wide variety of musical needs and opportunities.

There were many highlights from this past year – in June, the RLC jazz ensemble participated in the local Rose Days Parade, taking it to the streets on flatbed trailer. In the fall, all the ensembles prepared to record a compact disc of Christmas music which was released in December. Entitled "Hear the Angels Sing", the CD was dedicated to RLC musician Ginny Heuer, who was tragically struck and killed on September 27 while riding her bicycle in St. Paul. Proceeds from the sale of the CD benefitted our sister congregation in Tanzania, where Ginny was planning to travel to with other RLC members in early October. More than 60 present and past choir members joined together to sing for Ginny's funeral service.

In October, the Senior Choir and the RLC Brass Ensemble led our worship for Reformation Sunday. Choral concerts were presented in November by the World Voices choir, led by Karle Erickson, and the Augsburg College Centennial Singers. Several ensembles sang for the Thanksgiving eve service. In December, our Advent vespers services on Saturday evenings featured the "Holden Evening Prayer" service by Marty Haugen. On December 13, the vocal choirs, handbell choirs, and brass ensemble were joined by organ and string orchestra for the presentation of our Christmas Festival Concert. Holiday concerts were presented by the youth choirs of the Minnesota Opera as well as the Minnesota Boychoir. Various musicians and choirs assisted with our five Christmas Eve worship services. The last Sunday of the year featured RLC Jazz as the musical leaders for worship. December 31st, RLC Jazz again led a New Year's Eve worship service.

In February, we commenced our Lenten journey with our Ash Wednesday worship service, with music by the Senior Choir. In March, the Festival Choir began rehearsals for Holy Week and Easter, and we hosted the Gold Star Concert Band from North Dakota State University in a Saturday evening concert.

In April, our Holy Week and Easter worship services included numerous soloists, the Children's Choir, Junior Choir, Marys and Marthas, Festival Choir, RLC Brass, Praise and Worship ensembles, and an Easter Choir made up of the Junior Choir and worship ensemble vocalists. At the end of April, the handbell choirs served as worship leaders for the 5:00 and 9:00 services, assisted by members of the RLC Brass, Bill Whelan and Joe Husby, percussion, and Joe Mueller, clarinet, all conducted by Lori Haaland. Lori Haaland was recognized for 25 years directing handbell choirs at RLC.

May 3rd, organist Martha Mutch, the Senior Choir, Junior Choir, Marys and Marthas, Men's Quartet, Brass Ensemble, Praise & Worship Group, Praise & Worship Combo, and RLC jazz band all combined forces to present a spring concert, followed by an ice cream social. May 10th, Mother's Day, the Children's Choir, led by Theresa Tostengard sang for the 9:00 and 11:00 services along with side musicians Norm Herzog and Lara MacLean. May 17th, the Music, Worship and Prayer ministry was lifted up in a ministry focus, the Senior Choir, Junior Choir and Brass Ensemble presented music at 9:00 worship, and the Praise & Worship Group went "on the road" to lead worship at a church in West St. Paul.

These are some of the highlights of the many events of the year, and there were many, many participants who gave their gifts of talent and time to make it all happen. I am thankful for all of them. I'd like to give special thanks to our ensemble directors – Lori Haaland, Sharon Boyce, Kristina Hanson, and Theresa Tostengard, for their faithful service; to accompanists Marilyn Shardlow and Heidi Larson; to Martha Mutch, organist and Senior Choir accompanist; to our custodians Shelton, Hellena, Chris, Arlen, and Steve – you guys rock!; to Cindy and Bryn in the sound booth; to Grandma Jean, Colleen Hopple and the kitchen crew; to Pastors Craig, David, and Dave, and to Andrea Fluegel and all the office staff for all their assistance. Thanks also to Jeff Bowar, Scott Henry, Jill Cordes, KJ Olson, Virginia Podobinski, Lara MacLean, Barbara Pihlgren-Warner, Paul Husby, Amy Jauch, Charles and Deb Scott, Bill Whelan and Bob Nielsen for their many special contributions to our music program.

And above all we thank God, who gives us life, and breath to sing praises.

adult education ministry

Keith Gilbert, Chair – Adult Ed Ministry Team

The Adult Education Ministry team seeks to help adults grow in their faith and their relationship with Jesus Christ. This past year there were many opportunities for members and friends of Roseville Lutheran Church to mature and enrich their faith through Adult Education. Most Sunday mornings during the 10:10 Faith & Fellowship hour there were three or four Adult Education classes, studies, or discussion groups to choose from. These included Bible Studies on Matthew, Romans, Galatians and Ephesians; presentations on the lives of Jacob and Joshua; book discussions on The Purpose Driven Life and Opening the Book of Faith; classes about end-of-life decision making, financial stewardship, parenting, and how to tell your faith story; presentations about diverse mission and outreach opportunities, and more.

We also coordinated two successful midweek education opportunities. The first was three sessions on understanding Islam and to share our faith with our Muslim neighbors. The second was a five session Luther Seminary theology class called "Crazy Talk" that was offered via remote Web broadcast at RLC.

Various small groups met throughout the year, providing another opportunity for people to nurture their faith. A group called "Sojourners" met at Caribou on Tuesday nights and discussed a Eugene Peterson book. A couple of Bible study groups also met throughout the year in member's homes. A goal of the Adult Education Ministry Team is to nurture and increase small group participation at RLC.

We will be working this summer to upgrade the rooms that we use each Sunday for adult education. We are adding computer projection systems, DVD players, audio systems and permanent dry-erase boards to make the rooms more conducive to adult learning. For all of you who have participated in any of these adult education opportunities this past year, thank you! Look for new educational opportunities starting in September, and come and grow in your faith with us!

endowment fund board

Shirley Barber – Endowment Fund Chair

The RLC Endowment Committee guides the use of the Roseville Lutheran Endowment Fund. Contributions to this fund are held in perpetuity with the interest earned each year spent as directed by this board. This fund supports grants to further RLC outreach with applications accepted twice annually due May 1 and October 1. Grant application forms are available in the church office. The 9-member committee reviews grant applications twice annually. With your gifts and prayers we can grow to be an instrument for spreading God's word and the goodness that comes from it.

Annual fund raising includes Love Lights remembering and honoring loved ones. The RLC Endowment Fund will accept gifts of money, securities and properties, both real and personal. Gifts to the RLC Endowment Fund are exempt from federal and state inheritance taxes and capital gains taxes. Gifts given individually qualify as deductible for tax purposes.

The Roseville Lutheran Church Legacy Society recognizes individuals who have included Roseville Lutheran Church as a beneficiary in their will or estate plan as well as individuals who have made outright gifts of \$5,000 or more to the church's endowment. This support of the church's endowment provides financial resources to RLC to assist the church in carrying out its mission in perpetuity and serves as a lasting reflection of their values. A RLC Legacy Society dinner was held last fall recognizing the generosity of those contributors.

As God's people, we give thanks in occasions of life and even in death. Memorial gifts can be a very tangible way of remembering persons and events that bring thoughts of warmth and thanksgiving to us.



financial ministry

Paddy Emerson, Finance Manager

Finances are a by-product of our faith and our response to God's blessings in our lives. As we strive to move ever closer in our walk with Christ, we respond with our financial resources.

The Finance Committee meets monthly to oversee, advise and make recommendations to the Council regarding Roseville Lutheran Church's finances. A standing agenda item for the Finance Committee is the review of the previous month's noteworthy ministry events and the resulting financial summary. Significant discussion also takes place in preparation and planning of the RLC Ministry Spending Plan.

As we developed the proposed 2009-2010 Ministry Spending Plan we were thankful for God's abundance as witnessed through the faithful and consistent giving patterns of our congregation despite the current state of the nation's economy. We thoroughly analyzed and reviewed our current spending to identify any opportunities for savings or redeployment of funds, and factored in increased expenses we are unable to avoid. In light of economic constraints faced by our members, the recommended plan does not include any new ministry initiatives.

worship & prayer ministry

Kevin J. Miller

It has been a wonderful year in the areas of worship and prayer ministry. I am so grateful for our pastoral leaders. RLC is truly blessed to have lead pastor Craig Hanson, along with pastor David Hanson and pastor David Watson to lead us in worship. They consistently provide meaningful worship experiences in a variety of settings.

Our congregation is blessed with many talented musicians. Under the leadership of John Helgen, the music at RLC is diverse, yet always first rate. Our worship times are greatly enhanced by the awesome contributions of our senior choir, junior choir, children's choir, praise & worship teams, Marys and Marthas, handbell choirs, RLC brass, and RLC jazz.

Likewise, the prayer ministry at RLC is blessed to have a small yet powerful regiment of prayer warriors. Thanks to Pam McCulloch for leading the prayer team, and for leading the prayer shawl ministry with Cindy Bjerk. Thanks also to Janet Olsen for helming the prayer chain.

Among the unsung heroes of our congregation are the members of the altar guild. They maintain the chancel area of the worship center, and prepare communion, always behind the scenes. Please join me in thanking Marj Kuhl for her many years of service as the coordinator of the Altar Guild. She's a touch act to follow, yet I believe that Bev Bybee will be up to the challenge.

The big accomplishment of this past year has been the successful transition to the Evangelical Lutheran Worship book. Our congregation raised nearly \$20,000 so that we were able to purchase 1000 new worship books without affecting other areas of the budget. This new resource offers several new worship settings along with familiar ones, and a number of new hymns to complement a great selection of old favorites. My thanks to the task force members:

Jill Cordes, Scott Henry, Pam McCulloch, Jan Nelson, John Otteson, Carol Solie, and Carol Sorenson.

It has been my pleasure to serve as the chair of the Worship & Prayer Ministry Team. I have much appreciation for pastor David Hanson, and for John Helgen, the staff liaisons for this committee. The number of things they do to support our congregation are staggering. I hope that I have been a support to them.

Respectfully submitted

Proposed 2008-2010 Ministry Spending Plan

	08-09 Ministry Spending Plan	Proposed 09-10 Ministry Spending Plan	Variance
Worship & Prayer	220,834	223,058	2,224
Mission & Outreach	173,660	174,992	1,332
Education & Children's	172,849	175,274	2,425
Youth & Family	160,864	163,075	2,211
Christian Life	126,453	128,549	2,096
Sustaining Ministry	426,260	412,529	-13,731
Properties	234,590	249,621	15,031
Total	1,515,510	1,527,098	11,588

If you have any questions regarding the Finance Committee or the proposed 2009-2010 Ministry Spending Plan, please feel free to contact Paddy Emerson, Finance Manager, at (651) 487-7752, pemerson@rosevillelutheran.org, or Tammy Pust, President-Elect, at (651) 503-2725, pust@parkerrosen.com.

preschool news

Cindy Laszewski

Every school year seems to go by faster than the one before! Our school year begins in August when the teachers visit their students' homes. The benefits of this somewhat daunting task are many. The children get a chance to meet their teachers where they are most comfortable – in their own homes. When students come to school on the first day, they are already familiar with their teachers. An Open House is held for each of the classes the week before school starts. October was exciting with visits from the Roseville Fire department. In November, a special night was held for fathers, grandfathers, uncles, etc. for each of our five classes. These nights provide an opportunity for one-on-one time for the students, and the important men in their lives. It lets children know that they are important to these men. A similar night is held in April for the special women in our student's lives.

November is also the month of our poinsettia sale fundraiser. It is the only fundraiser of the year. Our heartfelt thanks to Tom and Heidi Johnson, owners of A. Johnson and Son Floral for their generous help and gracious service! The poinsettia plants are consistently beautiful. December is always such a fun month to be with children. Each class had its own special program. The Great Hall was beautifully decorated and there were wonderful treats for all our guests; Grandparents, Parents, Aunts, Uncles and the other special people that came to share that time with us.

January was fun as we used our imaginations and pretended it was summertime! February is always a lovely month with Valentine's Day parties. April is the month for Moms' night.

Spring will continue to be a busy time for us as we enjoy outdoor bike day and the All School Family Picnic!

Respectfully Submitted

quanbeck library

Susan Watson – Library Coordinator

This was another busy year in the library. Susan Watson took over duties as Library Coordinator during the summer. Over 500 items have been checked out from the library in the last year, including books, videotapes, DVDS, and CDs. Over 150 new items have also been added to the collection. These materials are all Christian-based and/or exhibit moral values.

The past year has been spent sorting through the hundreds of donated items and completing an inventory before more purchases are made. All items donated are reviewed for content and relevancy. Duplicates and items not added to the collection are given to the Boy Scouts and to the Lake Wapogasset Lutheran Bible Camp.



I would like to thank Jenny Zuppan for her help managing the circulation desk on Sunday mornings and to thank Rich and Julie Wendland for their continued support.

boy scouts

Rich Wendland

Charter Organization Representative



RLC is the charter organization to the Boy Scouts of America for both Cub Pack 297 and Troop 297. As a charter organization, RLC provides the facilities for meetings and storage. RLC has served as the charter organization for over 50 years!

Cub Scouts are boys in the 1st through 5th grade. The Pack has approximately 50 boys and 16 adult leaders. The activities this past year have included Pinewood Derby, and Rocket launch and raking leaves at RLC and at the Roseville VFW. They have also participated in Feed My Starving Children and Scouting for Food.

Boy Scouts are boys in the 5th through 12th grade. There are about 50 boys and 20 adult leaders. The boys in Troop 297 are very active. The boys participate in ten to eleven weekend campouts. The Troop also cleans up the Lexington Park each year and participates in the Scouting for Food. Lake Wapogasset Lutheran Bible Camp has again benefited from service projects done at the camp.

We thank Scoutmaster Joe Jennrich, outgoing Cubmaster Greg Johnson, new Cubmaster Mike Dolan, and all other adult volunteers for their time and effort in leadership with the boys.

lake wapo lutheran bible camp

Rich Wendland

Roseville Lutheran Church is one of about ninety churches comprising Lake Wapogasset Lutheran Bible Camp, Inc. There are four sites that make up the camp. The Lake Wapogasset site, located near Amery, Wisconsin, is a modern residential camp open year around. The Ox lake site, also located near Amery, Wisconsin, offers a more international and rustic camping experience. Luther Dell, located on Boy Lake near Remer, Minnesota, is a residential camp open during the summer. Wilderness Canoe Base, adjacent to the Boundary Wasters Canoe Area at the end of the Gunflint Trail, offers guided BWCA canoe trips during the summer.

Roseville Lutheran was involved in a number of ways this past year with Wapo. A few of the highlights are:

- Carly Tonkin was a counselor at Wapo and was on the Youth Encounter team that served in Hong Kong, Taiwan and the Philippines.
- Boy Scout Troop 297 did a number of service projects at the camp, including Eagle service projects.
- A number of members volunteered their time at Wapo and Wilderness Canoe Base.
- I represent RLC on the Board of Directors and serve on the Executive Committee as Ox Lake Committee Chair.

Wapo continues to include in their program the international perspective. Wapo has been working with China Service Venture to explore the possibility of establishing a camp in China. Wapo continues its partnership with Youth Encounter. Youth Encounter teams work at the Wapo and Ox Lake sites as counselors during the summer. These teams then travel within the US in the fall and then internationally the next spring. They then return to the Wapo and Ox Lake sites the next summer as counselors to share their experiences.

The Wilderness Canoe Base site continues to rebuild following the fire that destroyed over half the buildings. The reconstruction of the Trail Shack is nearly complete and will be rededicated this summer. New staff and camper cabins are nearly complete, as well. Much of the work is being done by volunteers with a number of youth and adult groups already scheduled for this summer.

Wapo is in the midst of developing a strategic plan to guide its camping ministry forward for years to come.

member news

(July 1, 2008 – May 18, 2009)

Members Received

(does not include baptism or those confirmed): 55

Baptisms

Child: 48

Adult: 3

Death of Members: 24

Weddings (officiated at RLC): 6

Confirmed (Sunday, May 17, 2009): 44

2009 NOMINATING COMMITTEE ELECTION CANDIDATES



Joel Toso, Congregational Vice President

My vision for RLC is that it would maintain its strength in biblical teaching, and expand its service and outreach.



Charles Scott, Worship & Prayer

"Shout for joy to the Lord, all the earth; burst into jubilant song with music"
Psalm 98:4



Janet Risinger, Youth & Family

I believe RLC continually plays a vital role in the Roseville area by offering warm and welcoming programs to the families in the surrounding communities. By nurturing the spiritual growth of members and visitors, RLC spreads the compelling message of God's grace and forgiveness in powerful and life changing ways



Larry Gunderson, Congregational Council Member

My vision is for RLC is to continue connecting people with God. It's about assisting youth as they develop their faith and helping adults strengthen their faith. As a church family, we can support each other in the up and down times of our lives.



Chenar Howard, Congregational Council Member

Having just served on the Vision Task Force, I feel RLC is well poised to be a congregation which is grounded in its Lutheran identity; offers opportunities to serve with our God-given gifts; challenges us and gives us the tools to grow in our faith; is welcoming and supportive; re-focuses us during worship; connects us to the community, the wider church, and the world; and is mission-minded. "And what does the Lord require of you? To act justly and to love mercy and to walk humbly with your God." (Micah 6:8)



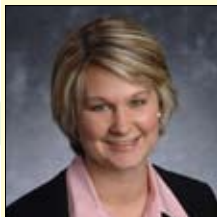
Carol J Solie, Congregational Council Member

The Visioning Task Force has done a tremendous job of developing a Vision, Mission statement and values for RLC. My vision is that we as members and friends of RLC carry on their work in all our daily encounters.



Shirley Barber, Endowment Fund

Roseville Lutheran Church has great potential to serve through its endowment grants program. In these challenging financial times, careful decision making is crucial. RLC members and friends are encouraged to continue considering special gifts and memorials to the RLC Endowment Fund.



Melissa Duce, Endowment Fund

It is my vision that the people of Roseville Lutheran Church work together to ensure sustainability that future generations will benefit from.



Matt Hoffer, Endowment Fund

I would like to see the church continue in it's wide area outreach, everywhere from the immediate community, to the world level including it's mission programs. The most satisfying parts for me, beyond the community of worship we participate in, is the rich educational outreach we have. Everything from the 10:10 hour, to distance lectures from local seminary sources, are of rare value to me.

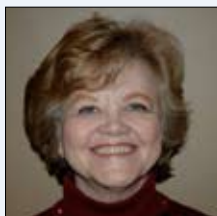


Geoff Kaufman, Nominating Committee

Vision for RLC: I am on the Visioning Task Force and worked to craft a vision for RLC.

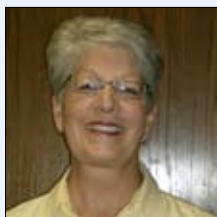


Gordon McKay, Nominating Committee



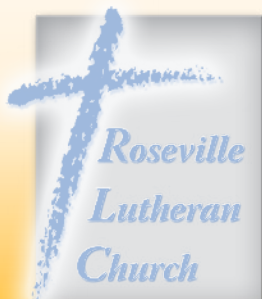
Jill Lund, Nominating Committee

I am excited about the new RLC Vision and Mission statements and the many conversations that were a part of this process during the past year. It is important that we continue to dialogue as we use these statements to set goals and priorities for RLC. Our world and our community are changing. The Good News of the Gospel remains the same. As faithful disciples of Jesus Christ, we strive to see all those around us through his eyes and to reach out to others with love and grace.



Kathy Pedersen, Nominating Committee

I am so excited about the unlimited possibilities that will arise as we begin to live our new vision, mission and values. There are so many things we can do to embrace our changing community and provide a place where we can address the needs and invite and welcome new friends into our church family.



Pastoral

Craig Hanson, Lead
David W. Hanson, Associate
David Watson, Associate

Music Ministry

John Helgen, Director
Sharon Boyce, Marys & Marthas
Kristina Hanson, Junior Choir
Lori Haaland, Handbell Choirs
Theresa Tostengard, Children's Choir
Martha Mutch, Organist

Children's Ministry

Kim Rehfeldt, Director
Julie Hanson, Asst. Director

Care Ministry

Doreen Kapfer, Parish Nurse

Student Ministries

Megan Moroff, Director
Neal Cannon, Director

Ministry Support Staff

Paddy Emerson, Financial Mgr.
Kathy Ferry, Financial Assistant
Andrea Fluegel, Pastoral Admin.
Laurel Hofeldt, Office Manager
Alija Triviski, Interim Communications
Linda Satrom, Administrative Asst.
Jan Harbour, Administrative Asst.

Hospitality Ministry

Jean Odeen, Director of Hospitality Ministry
Colleen Hopple, Kitchen Asst.
Tammy Heiple, Nursery Supervisor
David Booms, Welcome Team Coordinator

Nursery School

Cindy Laszewski, Director

Child Care House

Sue Menier, Director
Linda Borgstrom, Asst.

Facilities Ministry

Arlen Rystrom, Facilities Mgr.
Shelton Ingram, Custodian
Chris Taylor, Custodian
Steve Henry, Maintenance Supervisor
Helena Ingram, Custodian